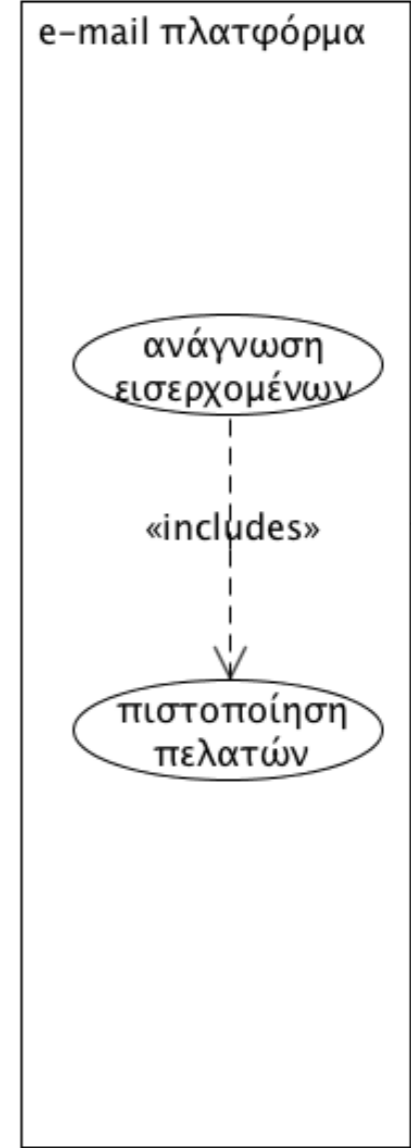
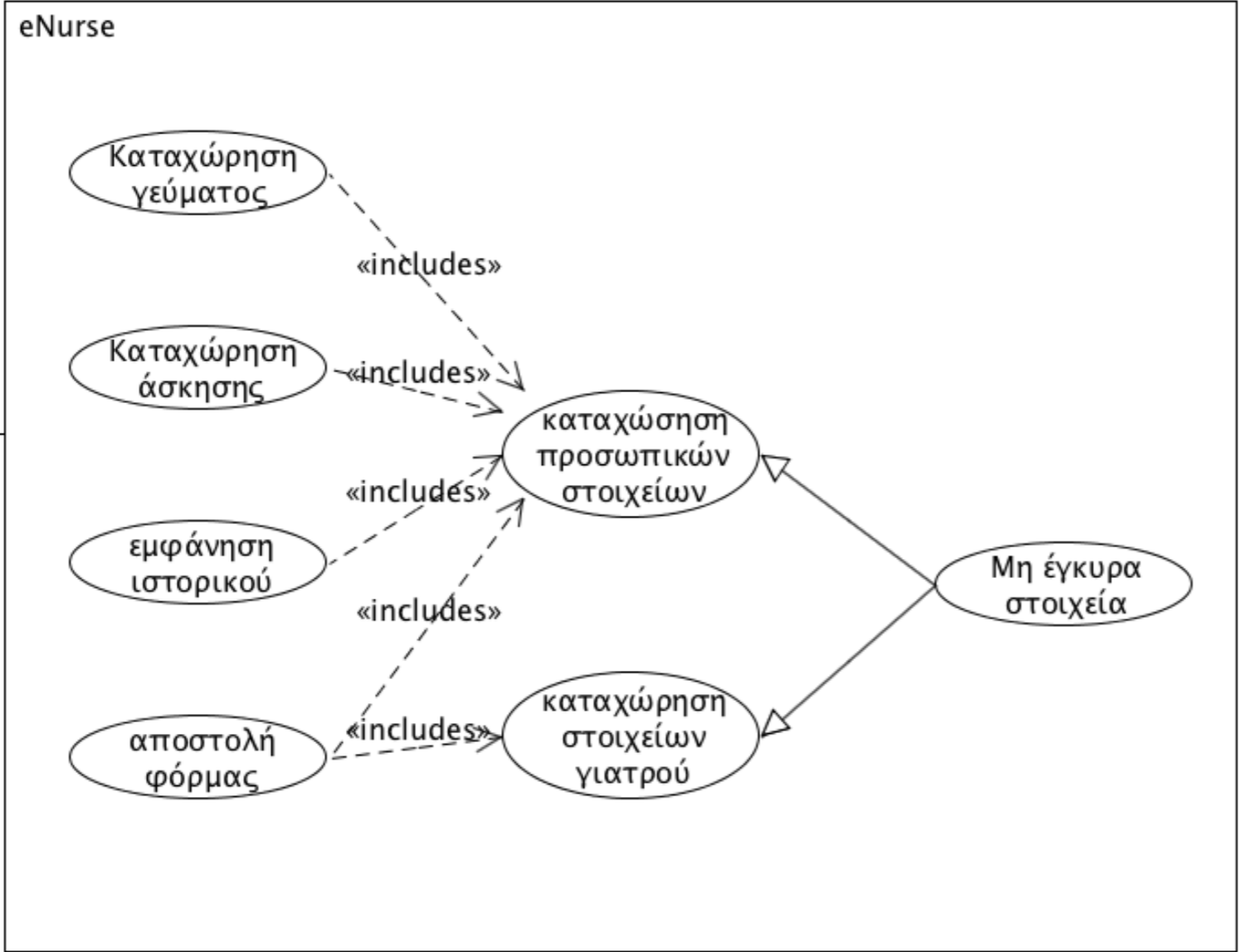
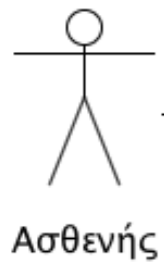


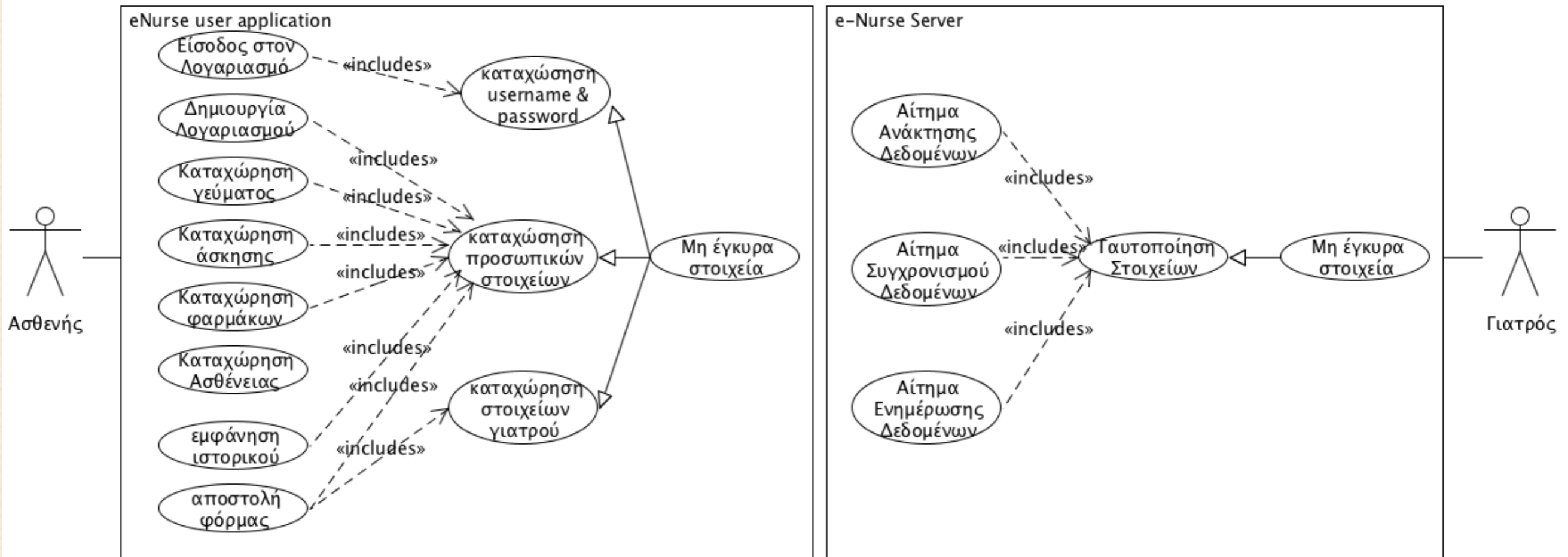
# UML Diagrams



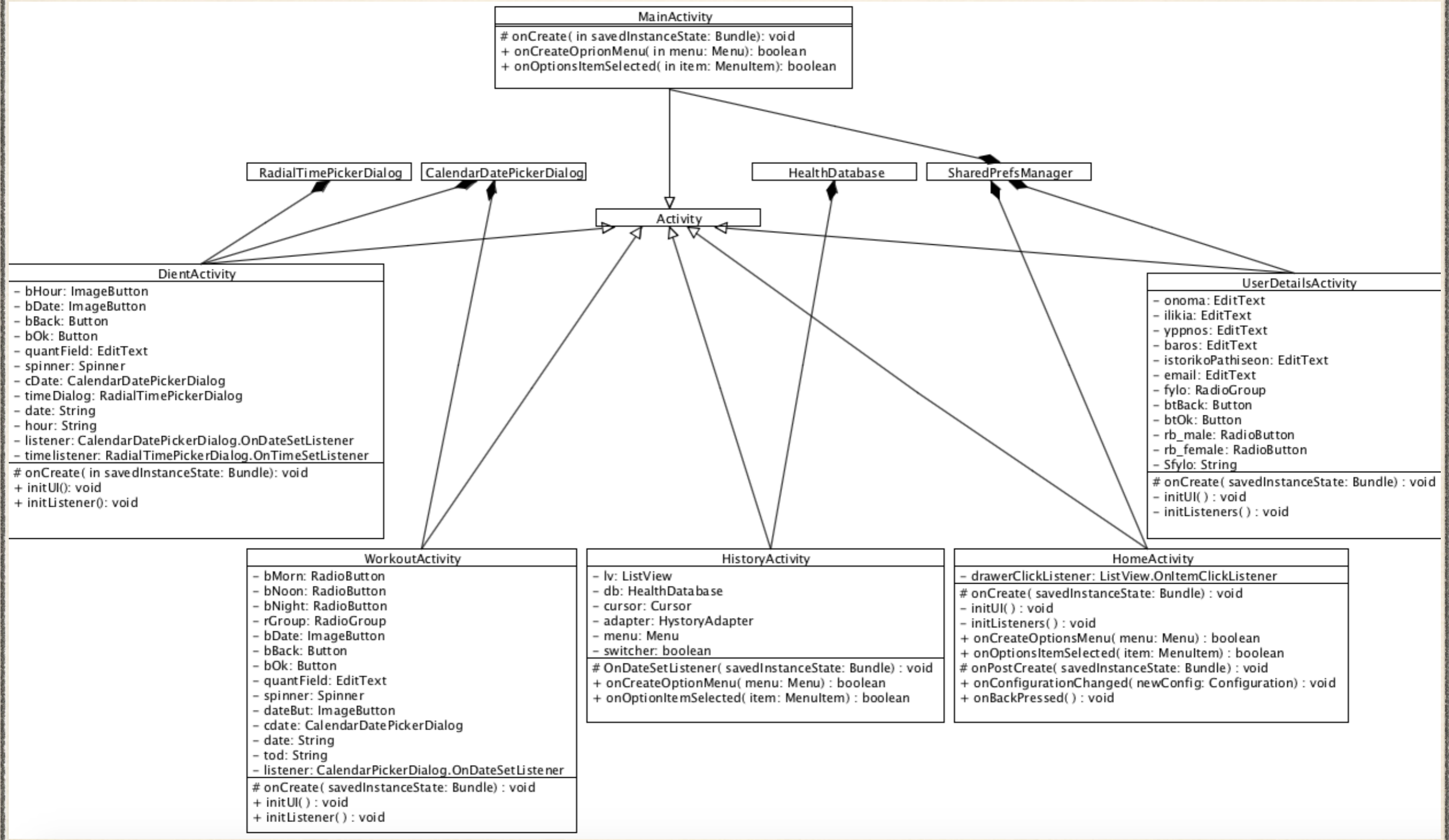
*eNurse Project*

# Use case Diagrams





# Class Diagrams



**MainActivity**  
 # onCreate( savedInstanceState: Bundle): void  
 + onCreateOptionMenu( in menu: Menu): boolean  
 + onOptionsItemSelected( in item: MenuItem): boolean

RadialTimePickerDialog

CalendarDatePickerDialog

HealthDatabase

SharedPrefsManager

Activity

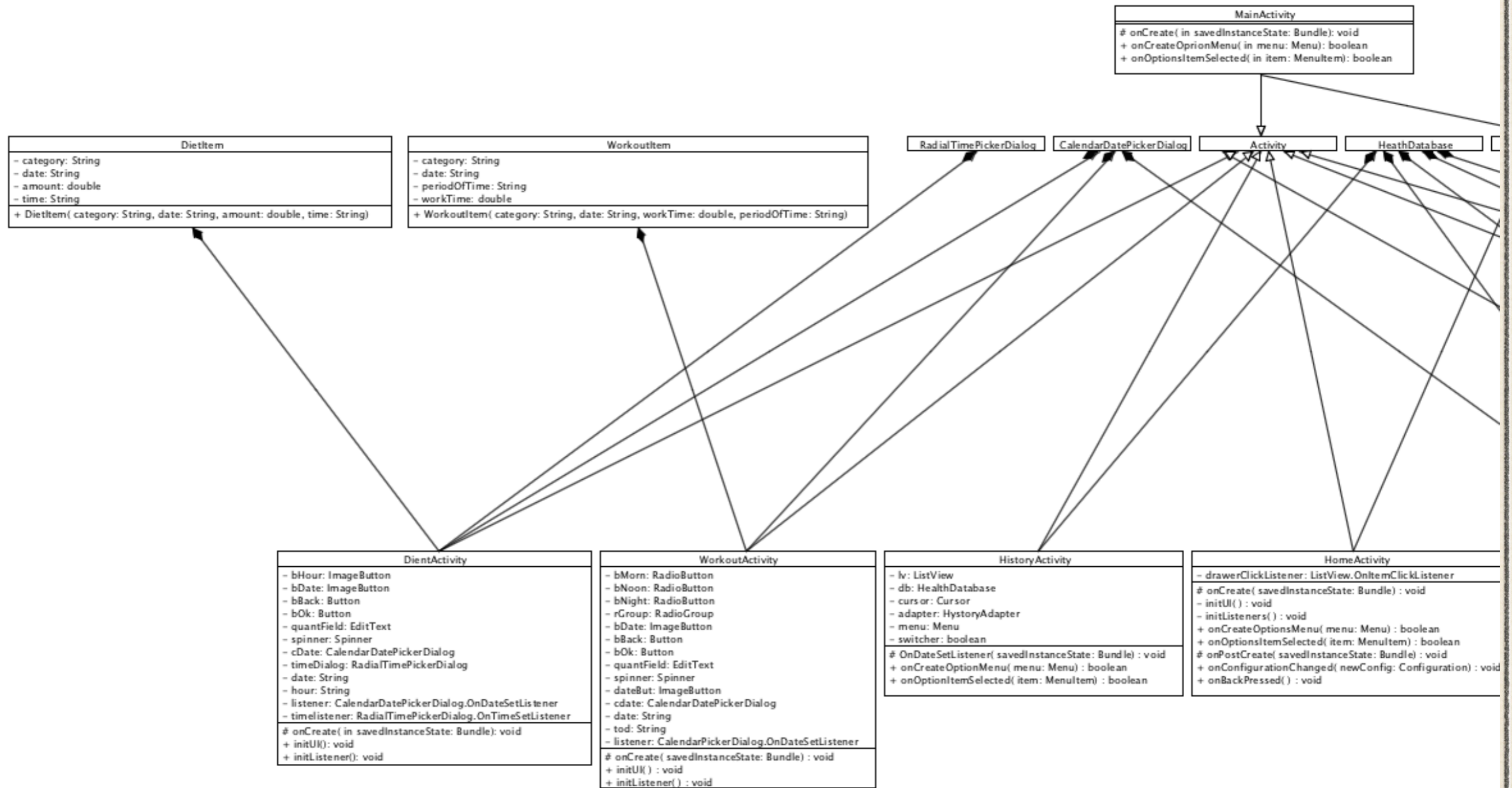
**DientActivity**  
 - bHour: ImageButton  
 - bDate: ImageButton  
 - bBack: Button  
 - bOk: Button  
 - quantField: EditText  
 - spinner: Spinner  
 - cDate: CalendarDatePickerDialog  
 - timeDialog: RadialTimePickerDialog  
 - date: String  
 - hour: String  
 - listener: CalendarDatePickerDialog.OnDateSetListener  
 - timelistener: RadialTimePickerDialog.OnTimeSetListener  
 # onCreate( savedInstanceState: Bundle): void  
 + initUI(): void  
 + initListener(): void

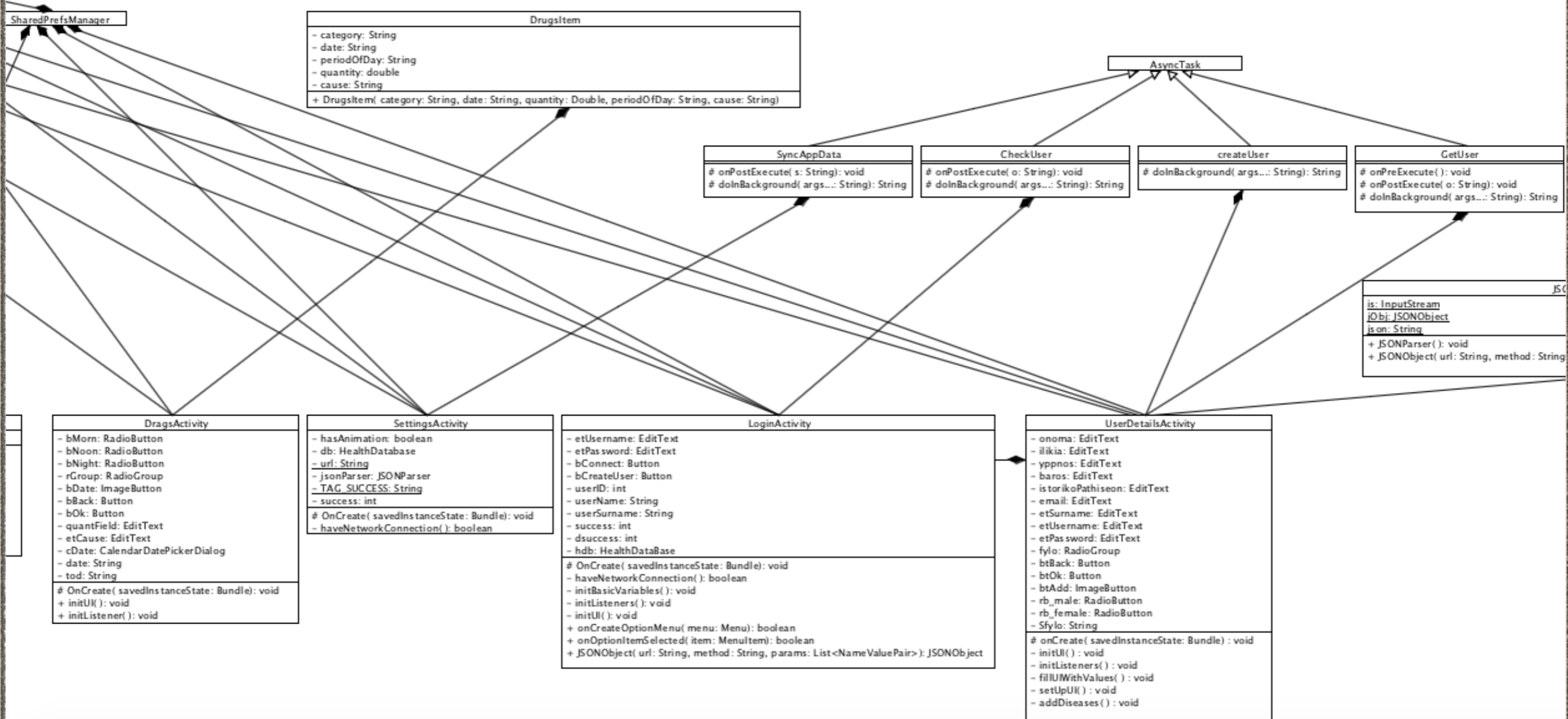
**UserDetailsActivity**  
 - onoma: EditText  
 - ilikia: EditText  
 - yppnos: EditText  
 - baros: EditText  
 - istorikoPathiseon: EditText  
 - email: EditText  
 - fylo: RadioGroup  
 - btBack: Button  
 - btOk: Button  
 - rb\_male: RadioButton  
 - rb\_female: RadioButton  
 - Sfyo: String  
 # onCreate( savedInstanceState: Bundle) : void  
 - initUI() : void  
 - initListeners() : void

**WorkoutActivity**  
 - bMorn: RadioButton  
 - bNoon: RadioButton  
 - bNight: RadioButton  
 - rGroup: RadioGroup  
 - bDate: ImageButton  
 - bBack: Button  
 - bOk: Button  
 - quantField: EditText  
 - spinner: Spinner  
 - dateBut: ImageButton  
 - cdate: CalendarDatePickerDialog  
 - date: String  
 - tod: String  
 - listener: CalendarPickerDialog.OnDateSetListener  
 # onCreate( savedInstanceState: Bundle) : void  
 + initUI() : void  
 + initListener() : void

**HistoryActivity**  
 - lv: ListView  
 - db: HealthDatabase  
 - cursor: Cursor  
 - adapter: HystoryAdapter  
 - menu: Menu  
 - switcher: boolean  
 # OnDateSetListener( savedInstanceState: Bundle) : void  
 + onCreateOptionMenu( menu: Menu) : boolean  
 + onOptionsItemSelected( item: MenuItem) : boolean

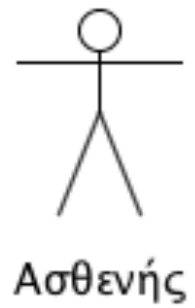
**HomeActivity**  
 - drawerClickListener: ListView.OnItemClickListener  
 # onCreate( savedInstanceState: Bundle) : void  
 - initUI() : void  
 - initListeners() : void  
 + onCreateOptionMenu( menu: Menu) : boolean  
 + onOptionsItemSelected( item: MenuItem) : boolean  
 # onCreate( savedInstanceState: Bundle) : void  
 + onConfigurationChanged( newConfig: Configuration) : void  
 + onBackPressed() : void







# Sequence Diagrams

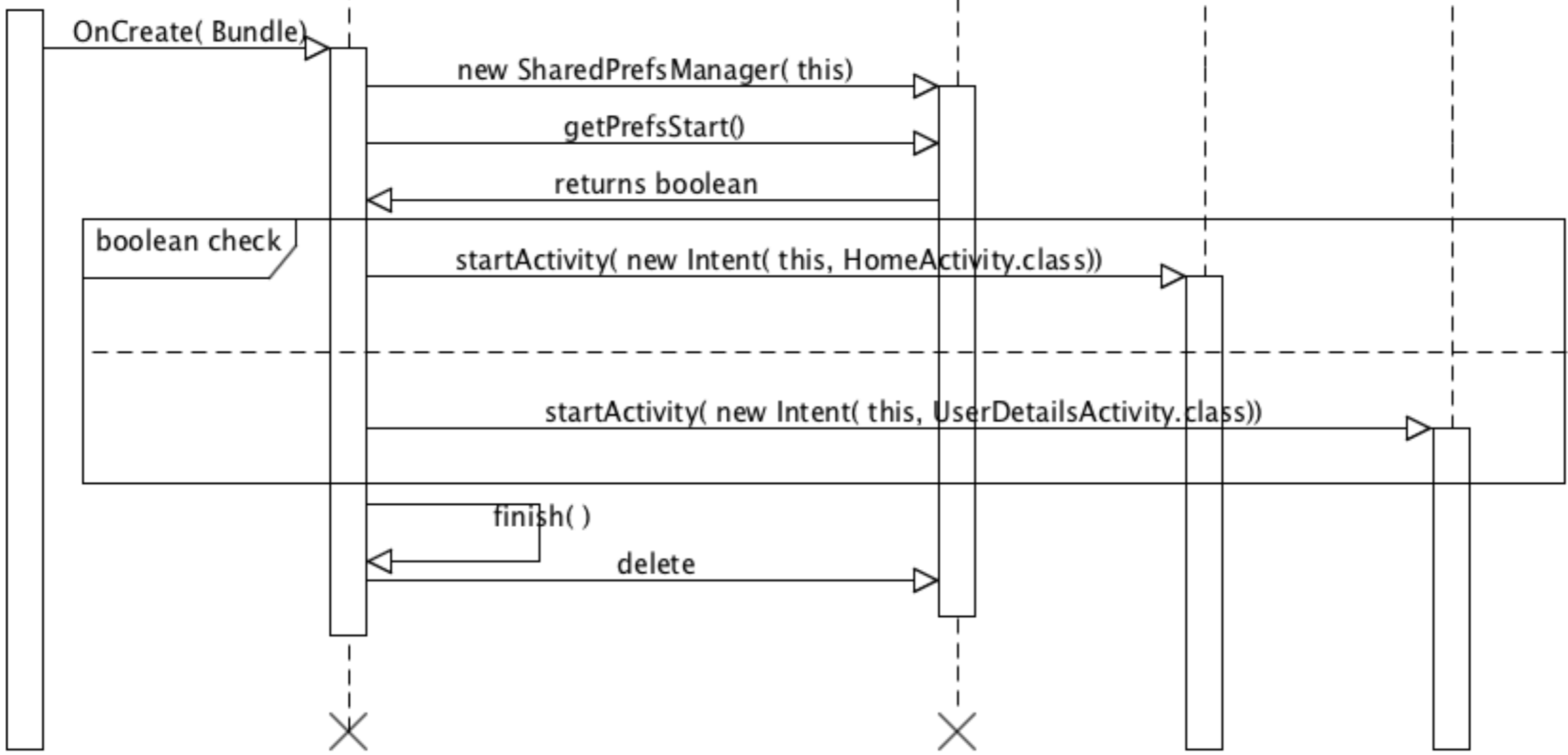


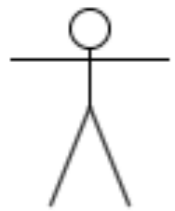
MainActivity

SharedPrefsManager

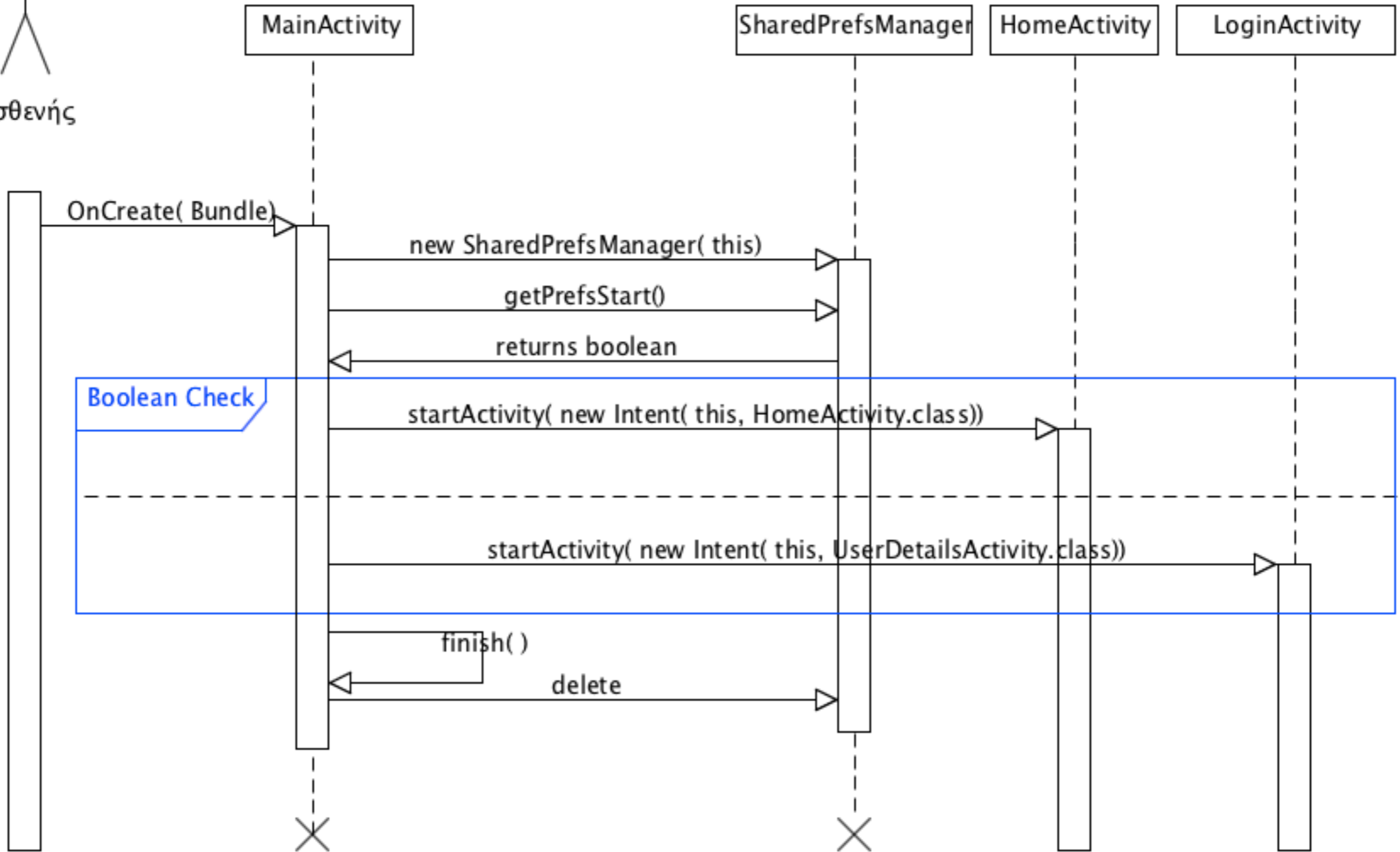
HomeActivity

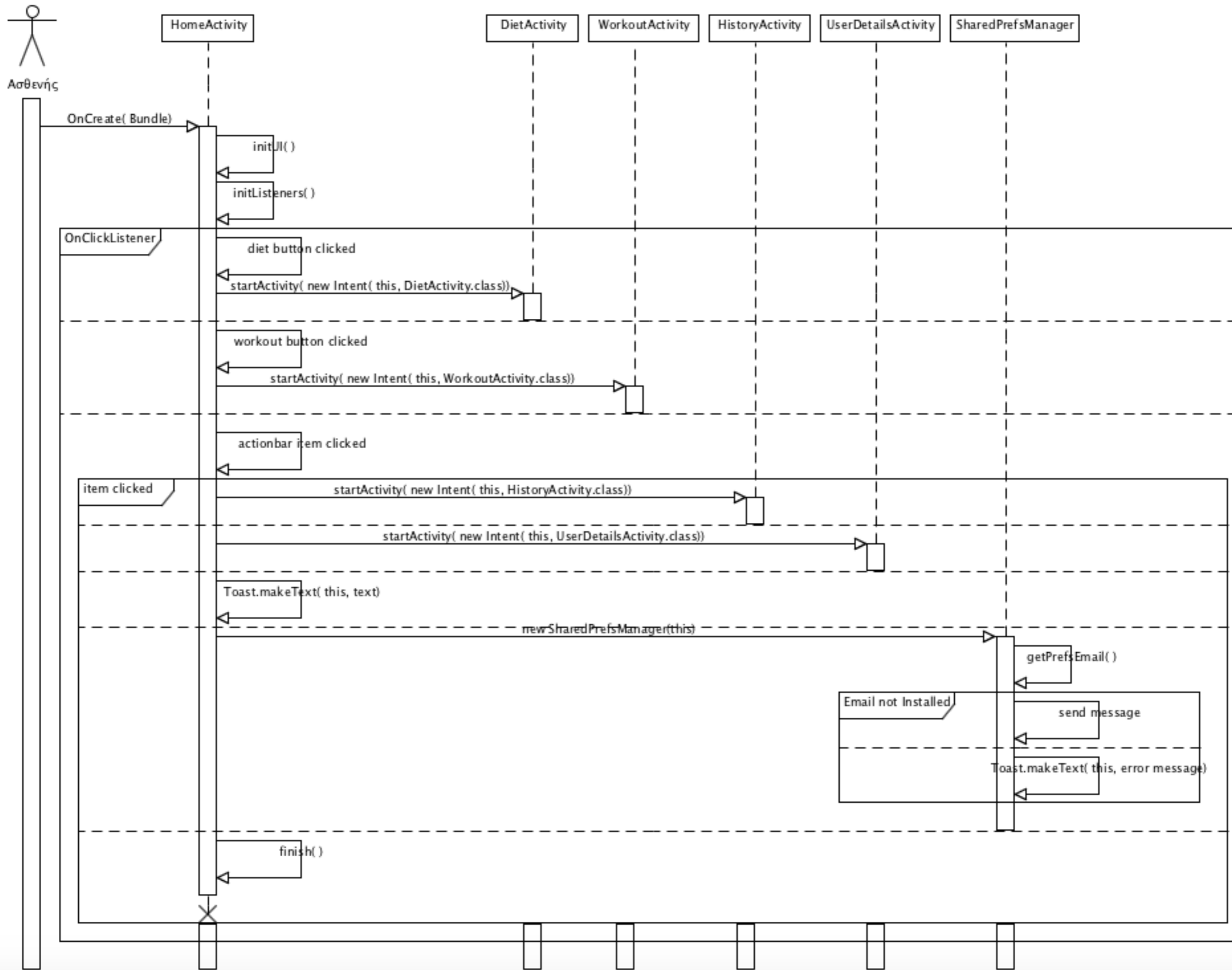
UserDetailsActivity

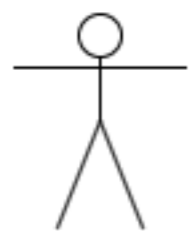




Ασθενής







Ασθενής

Ιστορικό

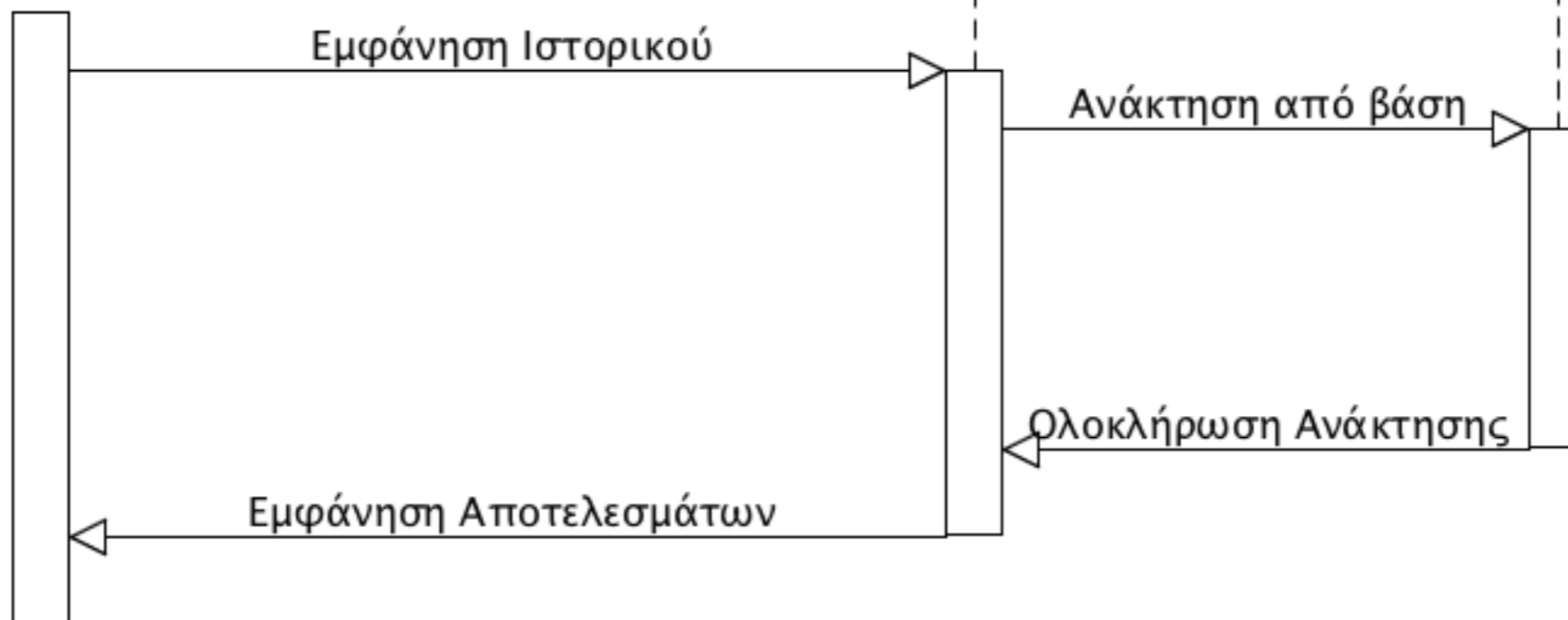
Βάση Δεδομένων

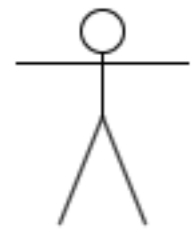
Εμφάνιση Ιστορικού

Ανάκτηση από βάση

Ολοκλήρωση Ανάκτησης

Εμφάνιση Αποτελεσμάτων



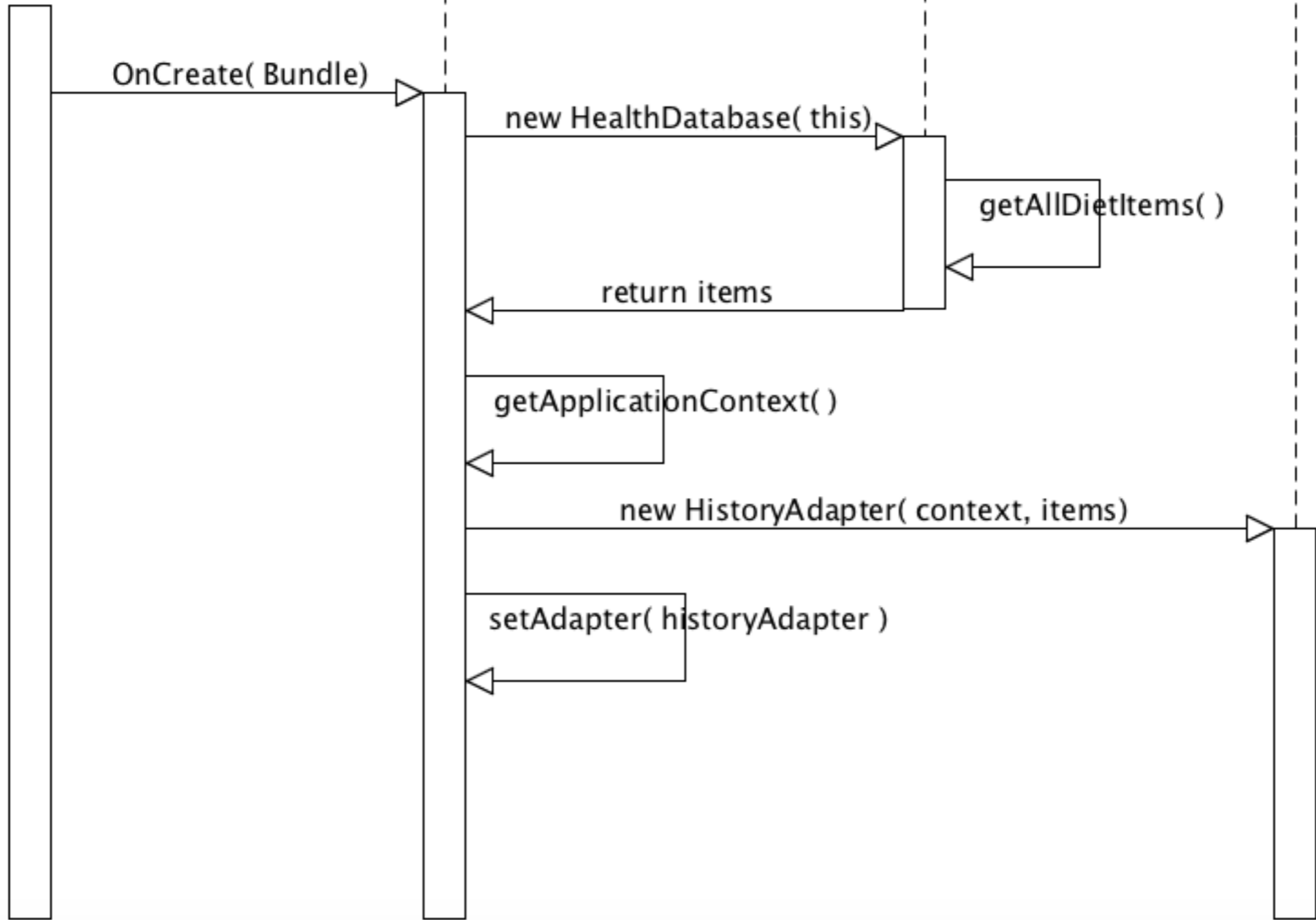


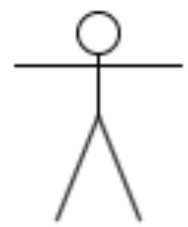
Ασθενής

HistoryActivity

HealthDatabase

HistoryAdapter



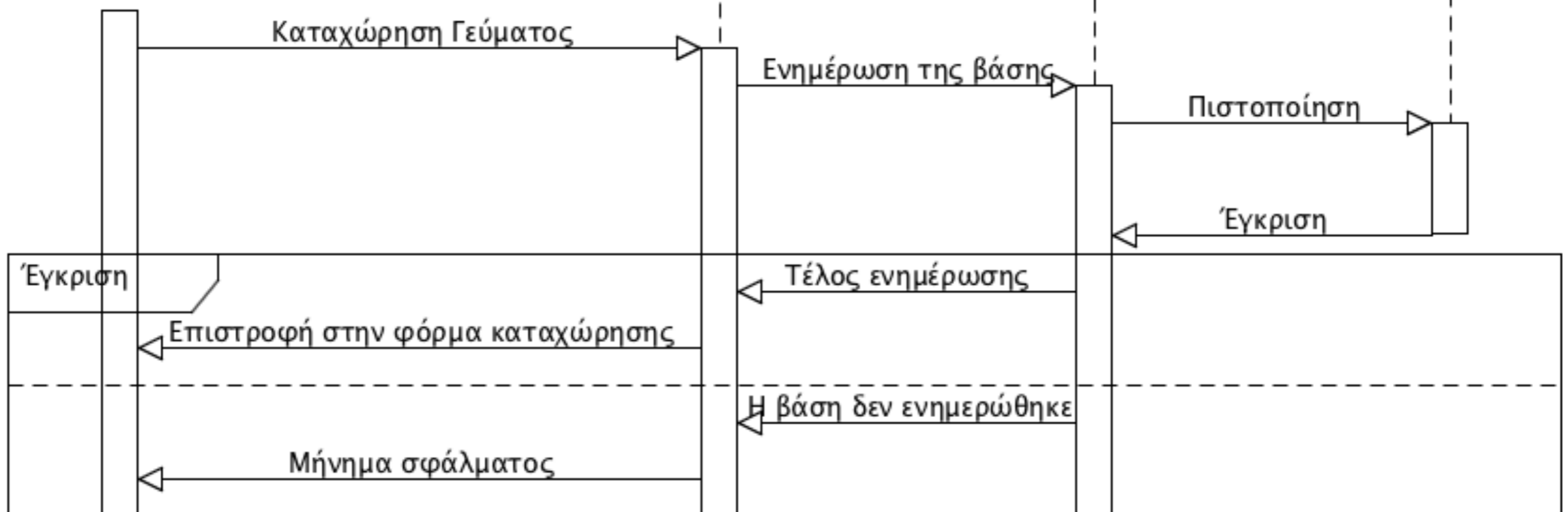


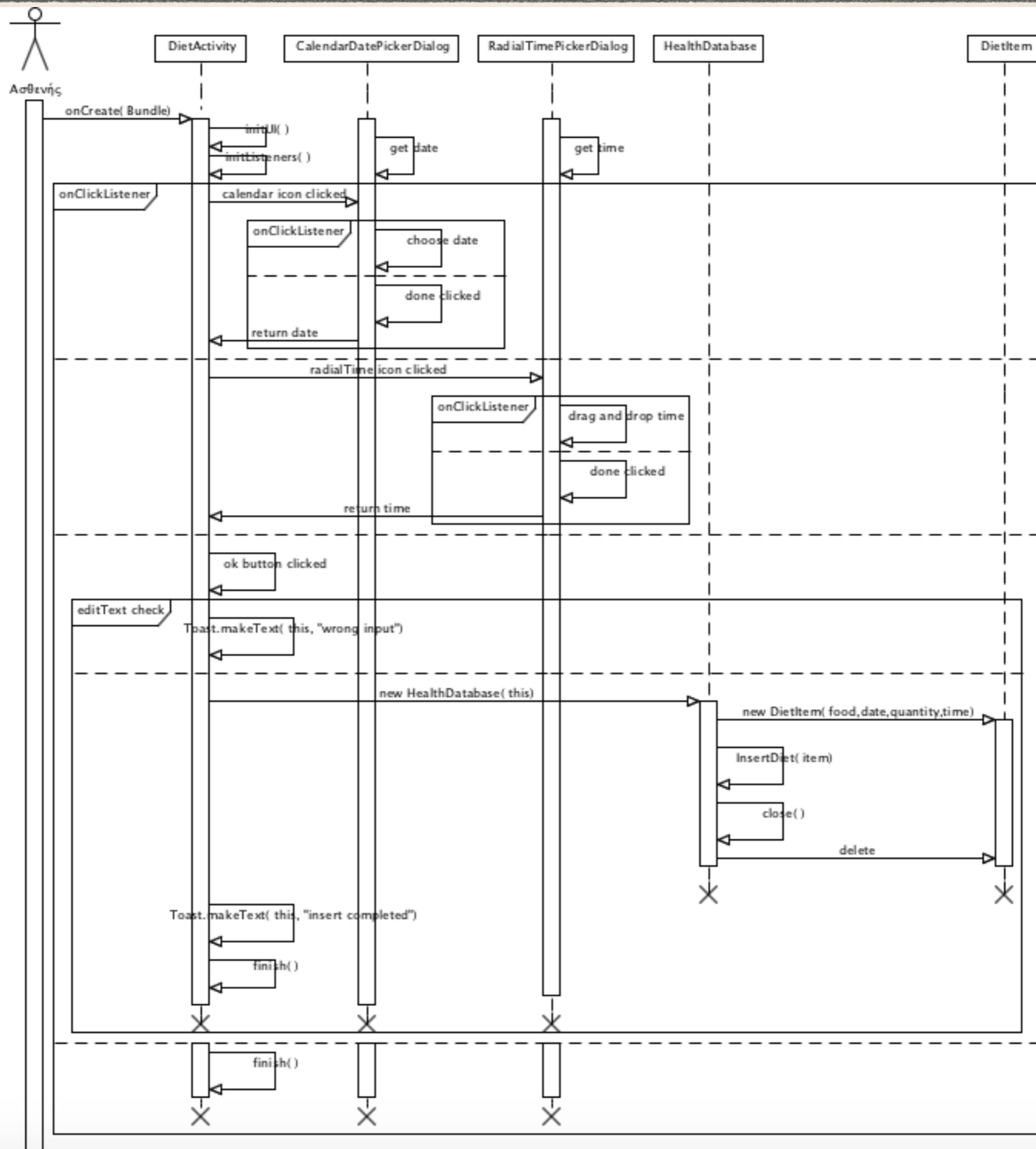
Ασθενής

Φόρμα Καταχώρησης Γεύματος

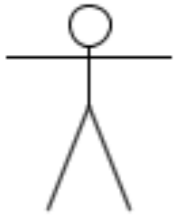
Βάση Δεδομένων

Πιστοποίηση







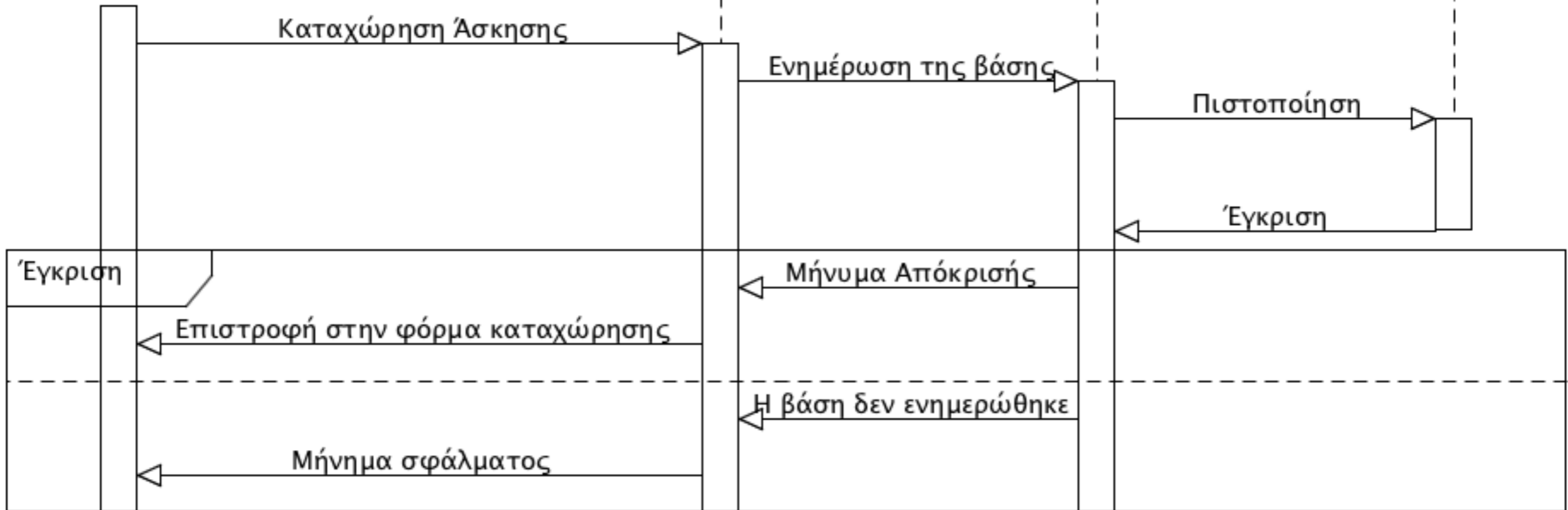


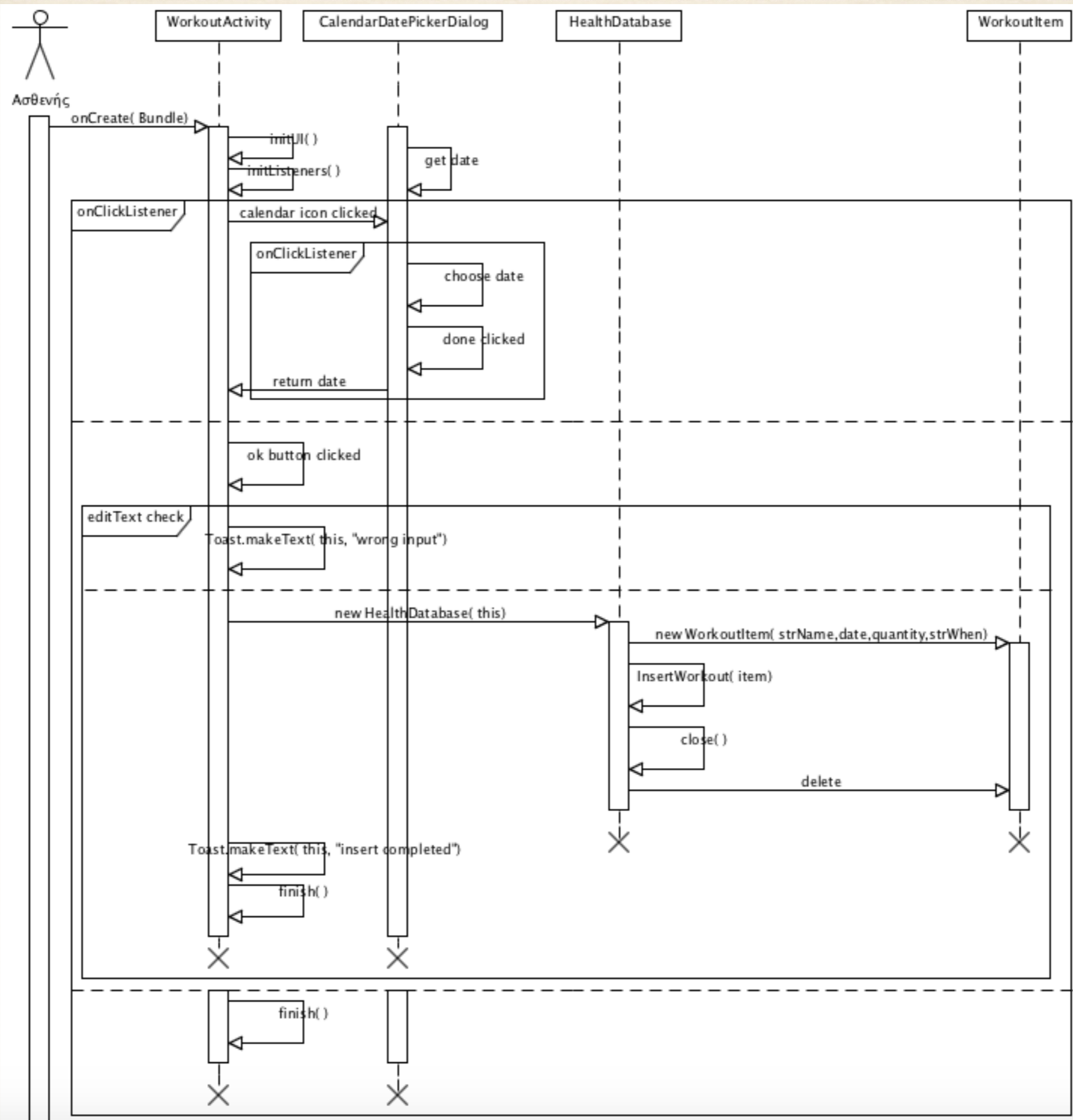
Ασθενής

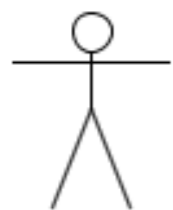
Φόρμα Καταχώρησης Άσκησης

Βάση Δεδομένων

Πιστοποίηση





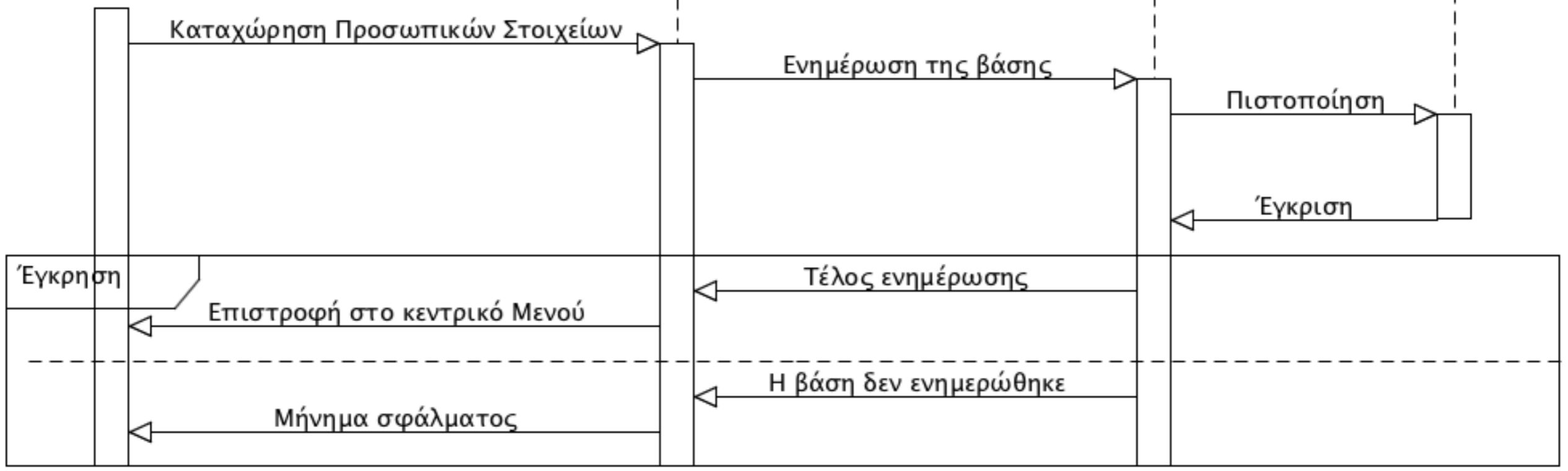


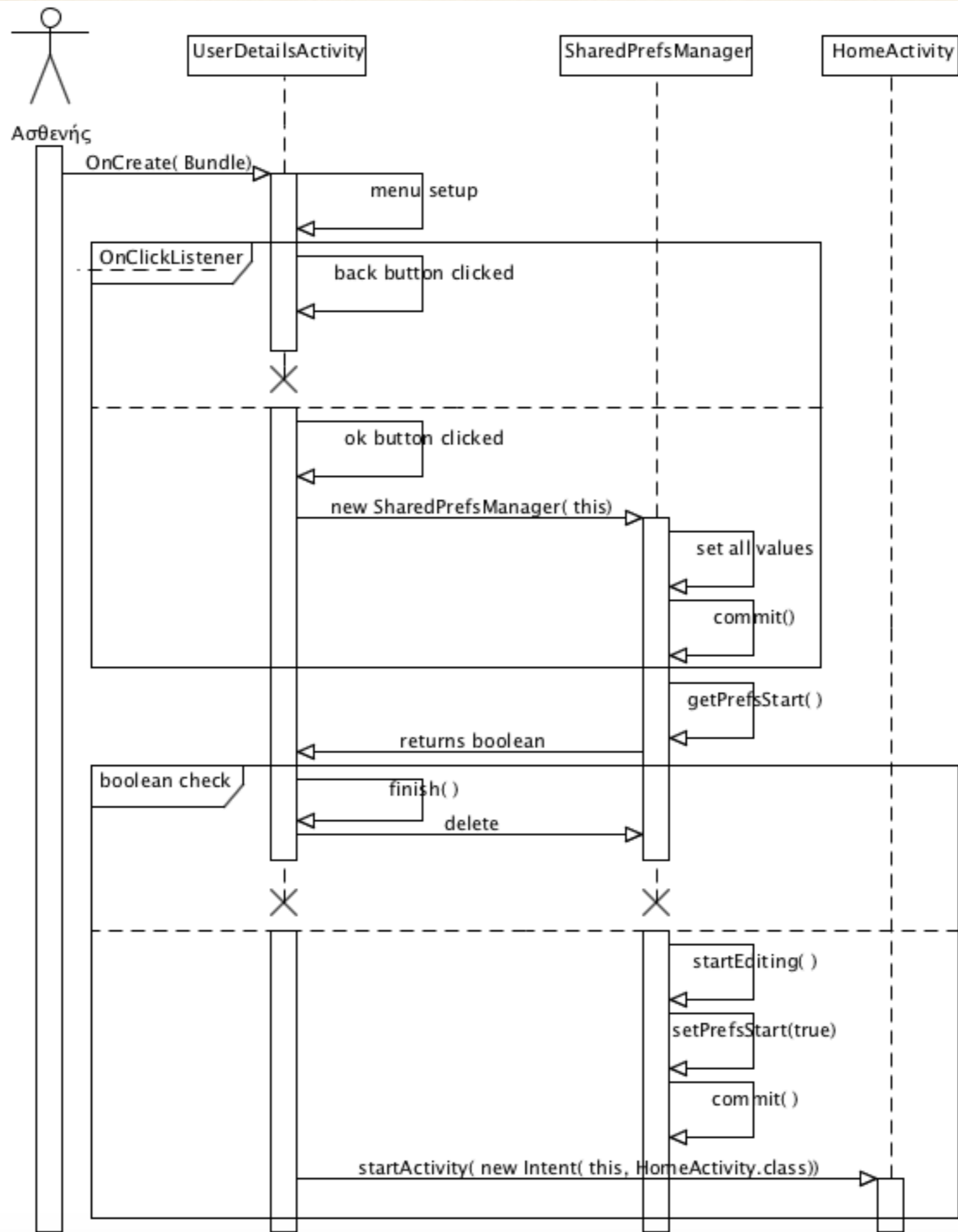
Ασθενής

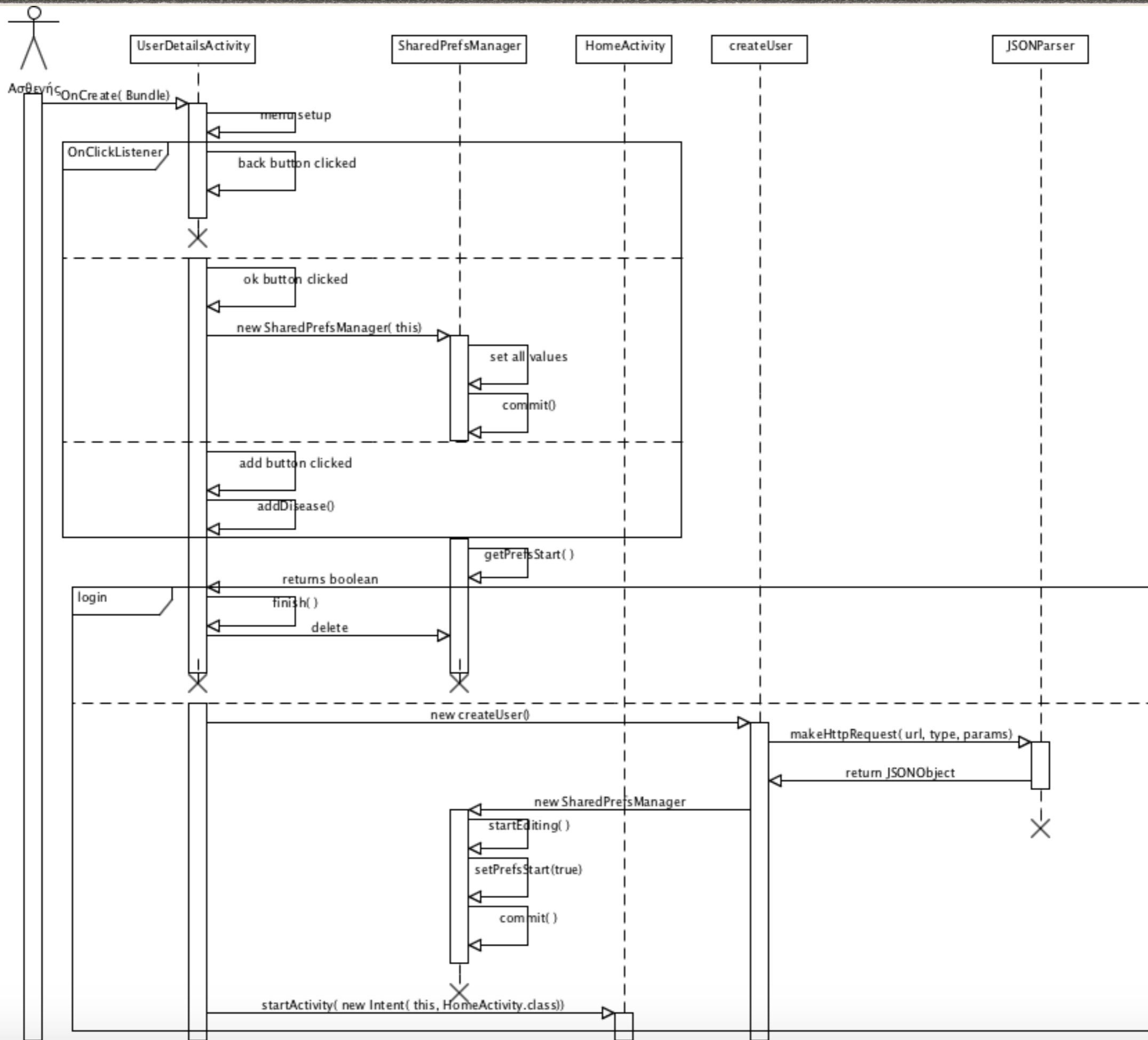
Φόρμα καταχώρησης προσωπικών στοιχείων

Βάση Δεδομένων

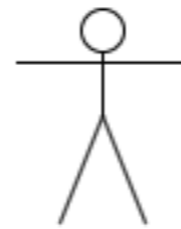
Πιστοποίηση



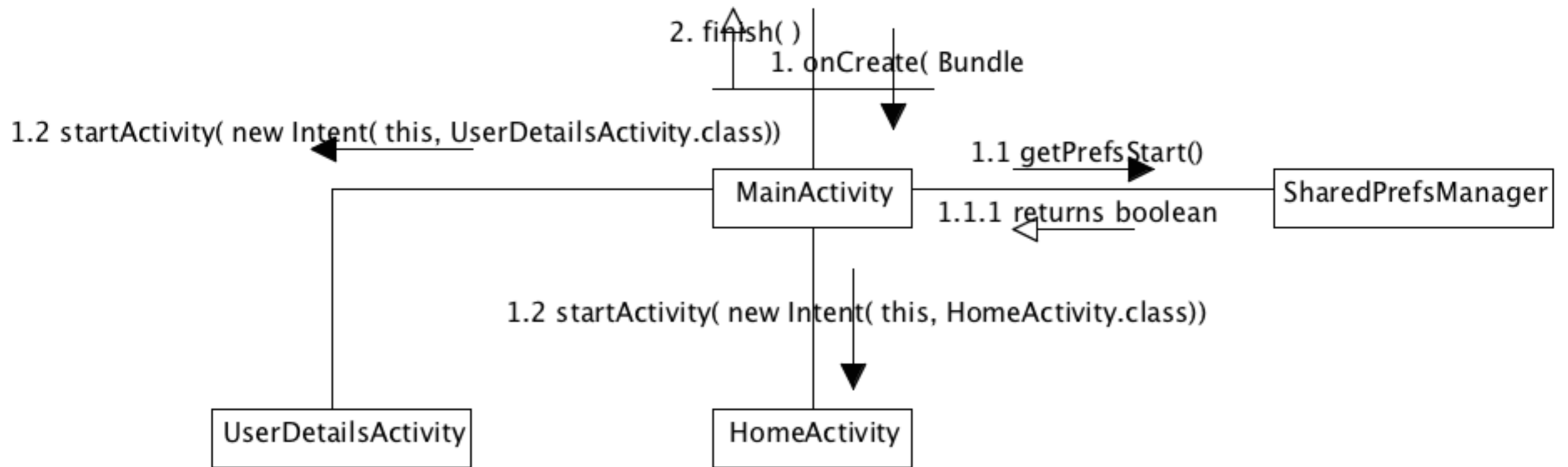


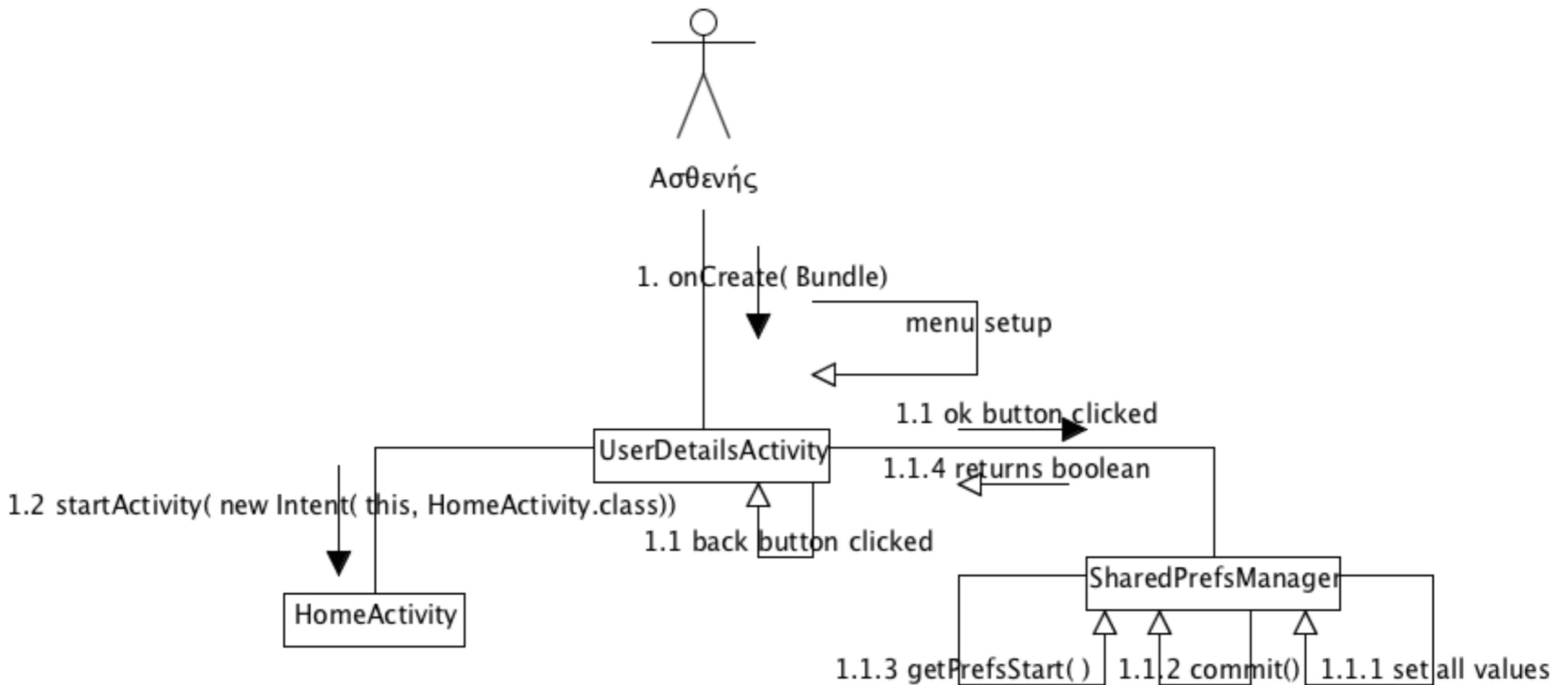


# Collaboration Diagrams

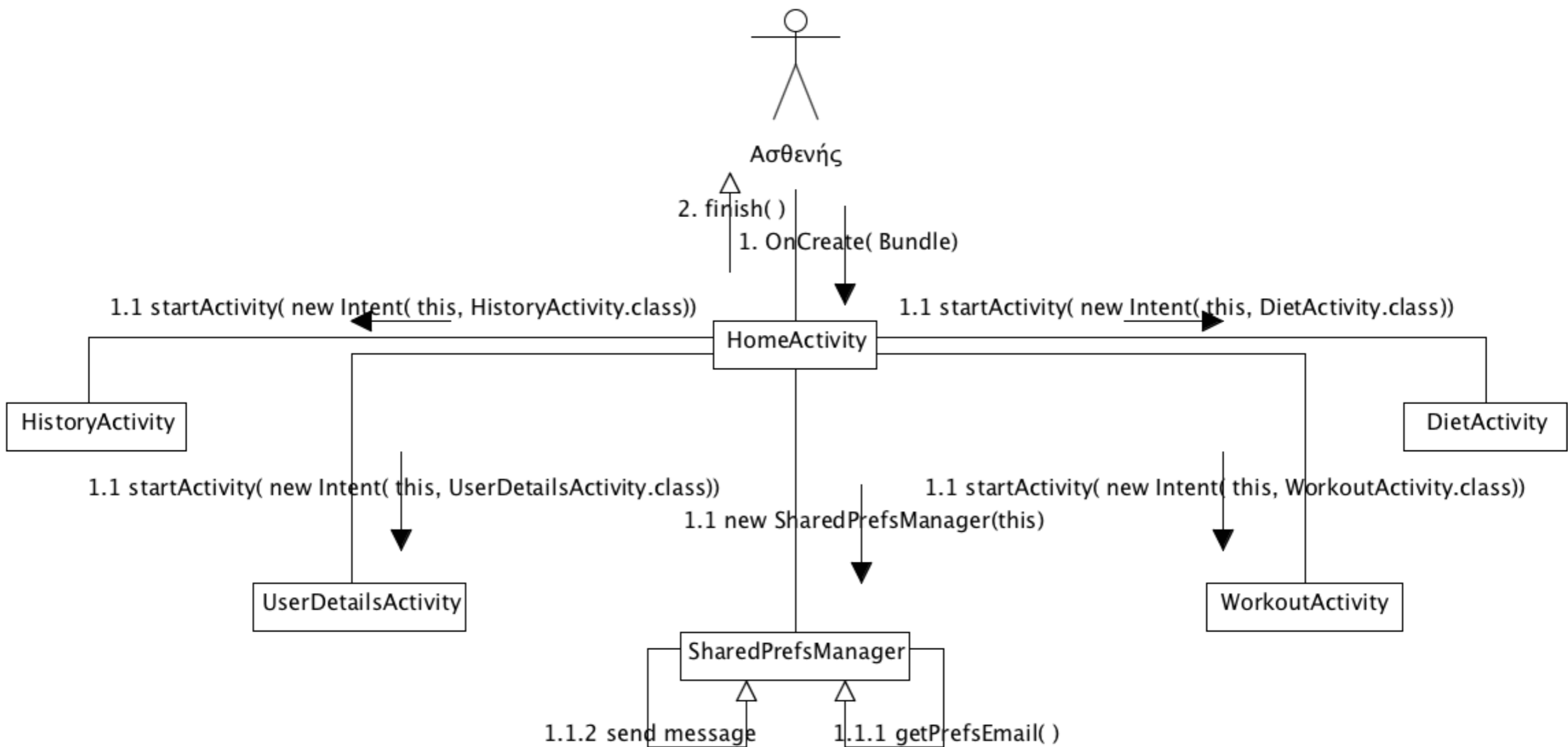


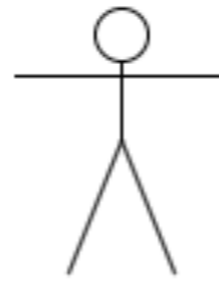
Ασθενής











Ασθενής

2. setAdapter( historyAdapter )  
1. onCreate( Bundle )

1.2 new HistoryAdapter( context, items )

1.1 new HealthDatabase( this )

1.2.2 return items

1.1.2 return items

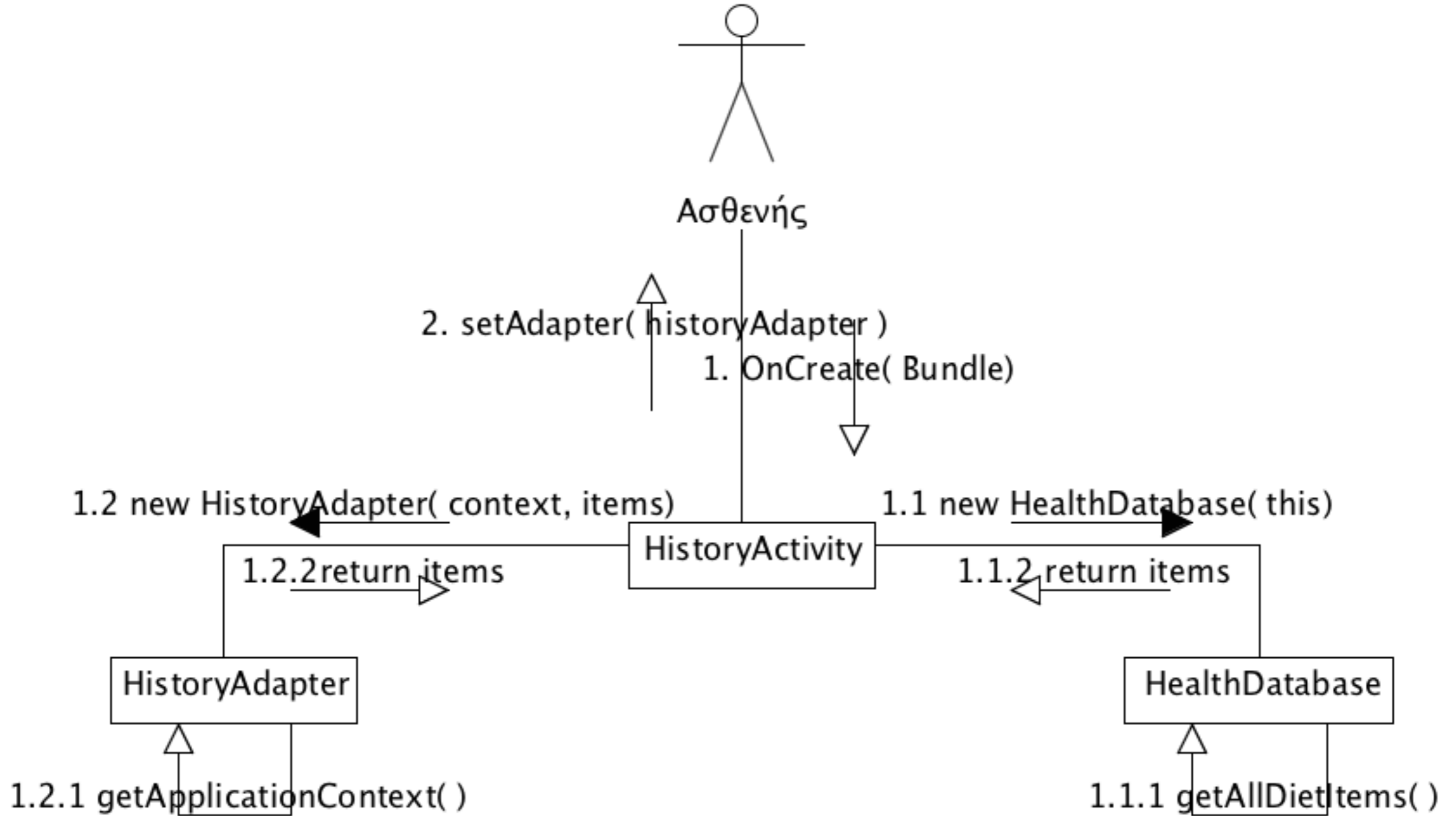
HistoryAdapter

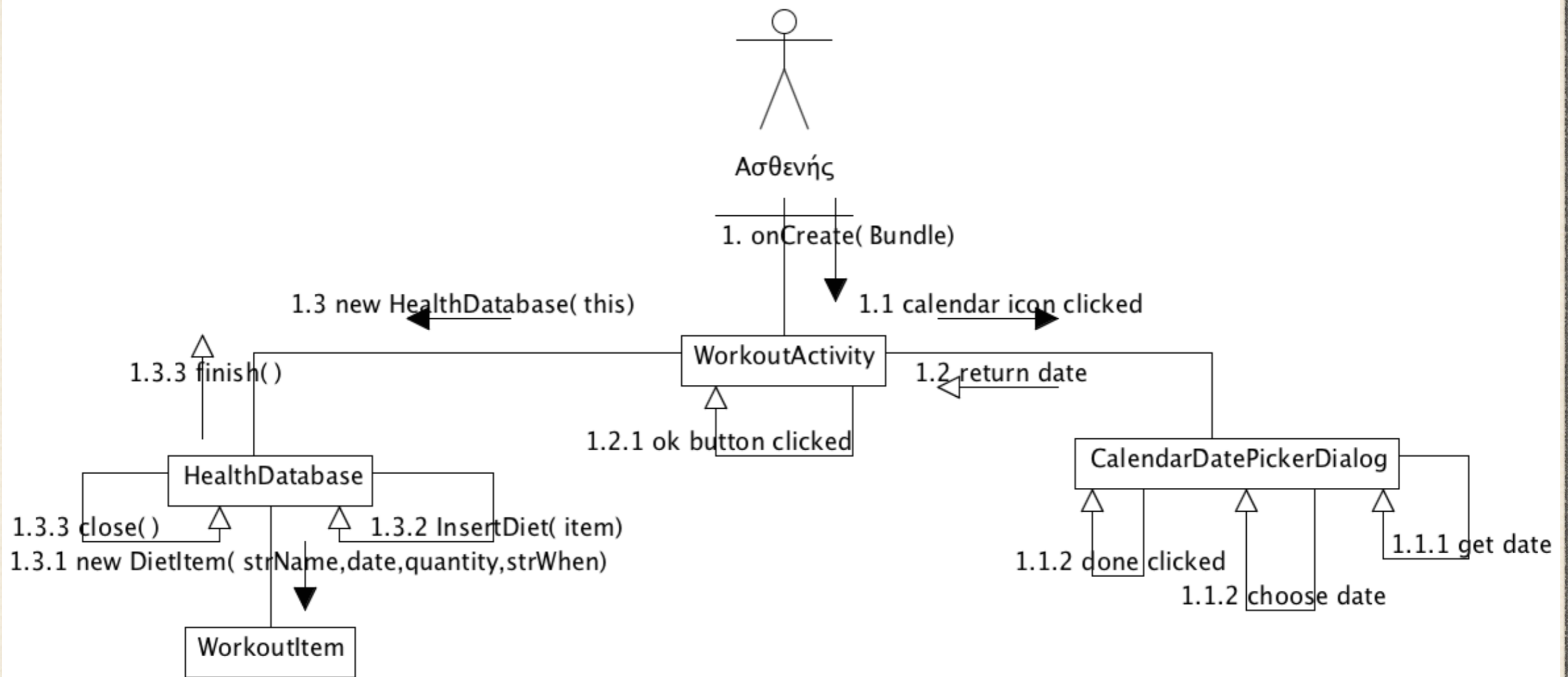
HistoryActivity

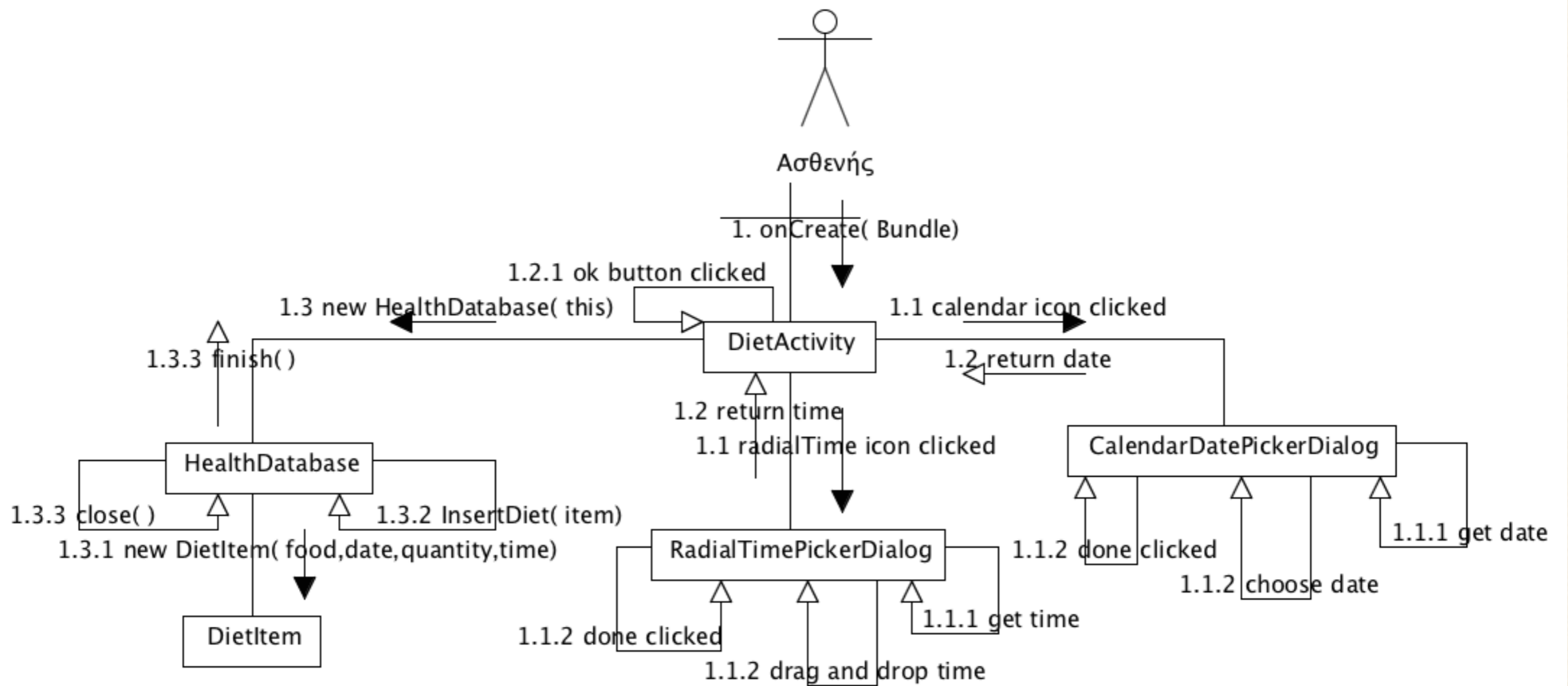
HealthDatabase

1.2.1 getApplicationContext( )

1.1.1 getAllDietItems( )







The end ..